



GRS | BV  
globalroadsystems

# PPE AND WORKSHOP EQUIPMENT





**Discover  
our products**



# TEKSON®

## HAND PROTECTION - protects what matters most!

### TEKSON DURABLE



Protective gloves made entirely of leather, manufactured from split cowhide leather. Featuring a rigid cuff with rubber coating. The wide safety cuff allows for quick removal of the glove. Colour: grey-red.

CAT II, EN 388 4244X, EN 420

SIZE  
10

### TEKSON COMFORT



Short driver-style work gloves, made from full-grain goatskin leather for durability and comfort. An elastic band on the back of the wrist improves the fit.

Standards: EN 388:2019 – 2122X, EN 21420:2020, CAT II  
Additional standards: EN ISO 21420:2020, EN12477:2001+A1:2005

SIZE  
9  
10

### TEKSON PRACTICAL



Protective gloves made of goatskin leather, American cut, fastened with a hook-and-loop fastener (Velcro). The back is made of black elastic jersey, the palm is made of a single piece of leather. Very good dexterity and grip.

CAT II, EN 388 2111X, EN 420

SIZE  
8  
9  
10  
11

### TEKSON SOLID



Goatskin leather gloves, American cut. The back is made of black cotton jersey, the palm, thumb and fingertips are made of natural-coloured goatskin leather. They allow for good breathability of the hands.

CAT II, EN 388 2111X, EN 420

SIZE  
8  
9  
10  
11

### TEKSON NITRILE BLACK



Nitrile rubber gloves, non-sterile, with textured fingertips, suitable for both hands. Flexible and offering good dexterity. AQL ≤ 1.5. Natural latex-free. Powder-free. Box of 100 units. Colour: black.

EN455, EN374-2, EN374-4, EN ISO

SIZE  
S  
M  
L  
XL

### TEKSON NITRILE BLUE



Nitrile rubber gloves, non-sterile, with textured fingertips, suitable for both hands. Flexible and offering good dexterity. AQL ≤ 1.5. Natural latex-free. Powder-free. Box of 100 units. Blue colour.

EN455, EN374-2, EN374-4, EN ISO374-5, EN ISO374-1, EN16523

SIZE  
S  
M  
L  
XL

## TEKSON BLUE



Protective gloves coated with blue latex. They feature a thin polyester reinforcement that fits the shape of the hand perfectly. Soft elastic wristband keeps the gloves in place on the wrist without compressing.

CAT II, EN 388 3131X, EN 420

SIZE  
8  
9  
10

## TEKSON BLACK



Protective gloves made of polyester, coated with black polyurethane, with elasticated cuffs. Seamless and very flexible. The gloves fit perfectly to the shape of the hand.

CAT II, EN 388 4131X, EN 420

SIZE  
7  
8  
9  
10

## TEKSON MASTER



Welding gloves specially designed for MIG welding. Long, made from cowhide leather, they offer excellent protection in demanding conditions. Their one-piece design with thermal lining makes them particularly resistant to high temperatures and molten metal splashes. Kevlar-reinforced seams and cuffs add to their durability. Packaging: 6 pairs in plastic film, 60 pairs per box. Standards: EN 388:2019 – 8121, EN 407:2020 – 412X4X, TYPE A, CAT II

SIZE  
10

## TEKSON PROWELD



TIG welding gloves, made from high-quality full-grain goatskin for the grip area, and split cowhide leather for the cuff. The gloves are sewn with a durable Kevlar thread, which increases their resistance to damage.

SIZE  
10

## PP WAMPIREK



Knitted protective gloves, coated with rubber, commonly known as 'vampires'. They feature an elasticated wrist. Ideal for all types of mechanical work. Blue and white colour.

CAT I

SIZE  
10

## ROXY



Winter gloves made from fluorescent acrylic knit fabric with a brushed surface.

The palm and fingers are covered with latex. The gloves have a non-slip surface.

EN 388 2231X, EN 511 X2X, EN 420

SIZE  
9  
10

## ACTIVE GRIP 1170



Latex-coated polyester gloves with a rough texture. Excellent grip in dry and wet environments. Abrasion and tear resistant. The seamless knit provides comfort and prevents irritation.

CAT II, EN 388:2016 3131X, EN 420:2003+A1:2009

SIZE  
7  
8  
9  
10

## ACTIVE GRIP 3240



Polyester gloves with a smooth, waterproof nitrile coating (first layer) that keeps hands dry. The sand-textured nitrile coating (second layer) absorbs oil, providing increased grip in wet and oily environments.

CAT II, EN 388:2016 4121X, EN 420:2003+A1:2009 EN 420:2003+A1:2009

SIZE  
7  
8  
9  
10

## GRIPZZLY NITRILE ORANGE



Powder-free gloves with diamond texture. They are resistant to oils and greases, making them ideal for use in automotive workshops. A major advantage of these gloves is their durability. Pack of 50 pieces. Colours: orange and black.

SIZE  
M  
L  
XL  
XXL



# GUIDE®

## SAFETY FOR YOUR ENVIRONMENT



## GUIDE 775 W



Winter work gloves with warm lining. The inside is covered with synthetic leather. The adjustable cuffs with Velcro ensure comfortable use thanks to a secure grip. They are equipped with a membrane. The gloves are characterized by high durability, flexibility and waterproofness.

CAT II, EN 420:2003,  
EN 388:2016 1121X, EN 511 X2X

SIZE  
7 9  
8 10

## GUIDE 590W



Windproof and waterproof gloves with acrylic lining for winter use. Fully immersed in a double layer of latex, which ensures flexibility and elasticity at low temperatures. Approved for contact with heat at level 2.

CE, CAT II, EN 388:2016 2231X,  
EN 511:2006 X2X,  
EN 407: 2004 X2XXXX

SIZE  
7 9  
8 10

## GUIDE 5152



Fitted gloves made of imitation leather. They offer good grip in wet and dry environments. They are equipped with an elastic cuff. Synthetic leather has the same properties and appearance as natural leather.

CAT II, EN 388:2016 1110X,  
EN 420:2003

SIZE  
7 9  
8 10

## GUIDE 1270



Welding gloves for the TIG method. Made of goatskin leather, resistant and flexible, on the inside and outside. The cuff is made of cowhide leather, and the seams are made of heat-resistant Kevlar.

EN 420:2003, EN 388:2016 2121X,  
EN 407:2004 413X4X

SIZE  
9  
10  
11

# MAPA<sup>®</sup>

## PROFESSIONAL

### PRECISION GLOVES

#### MAPA 500

Gloves with double nitrile coating (Grip&Proof). Provide grip and waterproofing in the presence of oils. Abrasion resistant, silicone free, leave no marks before painting. Can be washed up to 3 times at 40°C. Reduce heat up to 100°C in brief contact.

CAT III, EN 388 4121A, EN 420:2003+A1:2009, EN 407 X1XXXX



SIZE S  
M  
L  
XL

#### MAPA 526



Gloves fully coated with a double nitrile coating. Offer excellent grip and perfect waterproofing. Abrasion resistant, silicone-free, leave no marks before painting. Can be washed up to 3 times at 40°C. Reduce heat up to 100°C in case of brief contact.

CAT II, EN 420:2003+A1:2009, EN 388:2016+A1:2018, 4121X, ISO 18889:2019

SIZE S  
M  
L  
XL

#### MAPA 527



Highly elastic gloves offering excellent dexterity, coated with sanded nitrile. Breathable, with a durable coating. Pre-cut fingers reduce the risk of entanglement in moving tools. Can be washed once at 40°C without loss of performance.

CAT II, EN ISO 21420: 2020, EN 388:2016+A1:2018, EN 407:2020, EN 407 X1XXXX, EN 388 31X1A

SIZE S  
M  
L  
XL

#### MAPA 541



Highly elastic gloves offering excellent dexterity at the fingertips, coated with sanded nitrile. Breathable, with an abrasion-resistant coating. Silicone-free. Can be washed once at 40°C without affecting their performance.

CAT II, EN ISO 420:2003+A1:2009, EN388:2016, EN 407:2004, X1XXXX, EN 388 4121A

SIZE S  
M  
L  
XL

#### MAPA 548



Polyurethane-coated gloves. They offer excellent sensitivity to touch. The wide knit of the special lining allows for ventilation of the hand. Silicone-free.

CAT II, EN 420:2003+A1:2009, EN 388:2016+A1:2018, EN 388 3121X

SIZE S  
M  
L  
XL

#### MAPA 967



Nitrile gloves with textured fingertips. They offer great dexterity in oily environments. Silicone-free, they can be worn alone or as overgloves.

CAT III, EN 420:2003+A1:2009, EN ISO 374-5:2016, EN 374-1:2016

SIZE S  
M  
L  
XL

#### MAPA 700



Gloves coated with a smooth nitrile coating over ¾ of the surface and a rough coating on the palm. They are warm thanks to the Temp-Ice 700 insulating lining. Recommended for work at low temperatures down to -10°C. Adhesive and flexible. Can be washed up to 5 times at 60°C.

EN 420:2003+A1:2009, EN 388:2016 3222X, EN 511:2006

SIZE 7  
8  
9  
10



## MAPA 710



Dexterity gloves with thermal protection. Nitrile-coated gloves with nitrile dots for better thermal insulation and enhanced grip. Silicone-free. Ideal for working in hot environments.

EN 420:2003+A1:2009,  
EN 388:2016 4111X,  
EN 407:2004 X1XXXX

SIZE  
7  
9  
11

## MAPA 720



Gloves offering both dexterity and cut resistance, while providing thermal protection. They are coated with a layer of nitrile, which ensures better grip when working with oil.

EN 420:2003+A1:2009,  
EN 388:2016 4343B,  
EN 407:2003 X2XXXX

SIZE  
7  
9  
11



# FOR THE GOOD OF YOUR HANDS AND THE ENVIRONMENT

## SHOWA 7500PF \*



Disposable, biodegradable gloves. The rolled cuff prevents dirt from entering. The absence of powder and latex reduces the risk of allergic reactions. They have a textured surface.

EN ISO 374-1:2016/Type B,  
EN ISO 374-5:2016

SIZE S  
M  
L  
XL

## SHOWA 6112PF \*



Universal disposable gloves that are biodegradable. They allow you to retain dexterity and tactile sensitivity. Approved for contact with food.

CAT II, EN ISO 374-1:2016/Type B,  
EN ISO 374-5:2016

SIZE S  
M  
L  
XL

## SHOWA 6110 \*



Biodegradable disposable gloves made of nitrile material with a thickness of 4 mil / 0.10 mm. Waterproof. They allow for a high level of dexterity. Approved for contact with food.

CAT III, EN ISO 374-1:2016/Type B,  
EN ISO 374-5:2016

SIZE S  
M  
L  
XL

## SHOWA 7545 EBT \*



Biodegradable disposable gloves with a thickness of 0.10 mm and a length of 295 mm. Made of nitrile. They reduce the risk of damage and allergies, while offering better chemical protection without compromising finger sensitivity.

CAT III, EN ISO 374-1:2016/Type B,  
EN ISO 374-5:2016

SIZE S  
M  
L  
XL

\*Laboratory studies indicate that they decompose by 82% in 386 days.

# Ansell

**SAFETY AT WORK,**  
ENVIRONMENTALLY FRIENDLY

## WN18B-00195



It has a lightweight laminated material and breathable laminated material with micro-pores. Silicone-free. It protects against fine solid particles or splashes of less hazardous liquids.

EN ISO 13982-1 type 5,  
EN 13034 type 6, EN 1073-2,  
EN 1149-5

SIZE M  
L  
XL  
XXL

## ANSELL 11-801

Nitrile foam-coated gloves, manufactured using KnitZonz™ technology. The dark lining is well suited to dirty environments.

CAT II, EN 1149,  
EN 388:2016 3131A,  
EN 388:2016,  
EN 420:2003+A1:2009

SIZE S  
M  
L  
XL



## ANSELL 11-800



Nitrile foam-coated gloves, manufactured using KnitZonz™ technology. They offer greater stretch and elasticity in areas of increased pressure.

CAT II, EN 1149, EN 388 3131A,  
EN 388:2016,  
EN 420:2003+A1:2009

SIZE S  
M  
L  
XL

## ANSELL 11-840

Nitrile foam-coated gloves FORTIX™ with a thickness of 1.1 mm, guaranteeing level 4 abrasion resistance. The lining is adapted to the shape of the hand. Silicone-free.

CAT III, CE, EN 420:2003 + A1:2009,  
EN 388 4131A, EN 407X1XXXX

SIZE S  
M  
L  
XL



## ANSELL 11-816



Gloves with nitrile foam coating. The very thin construction ensures high tactile sensitivity and ease of use with small parts. Antistatic. Free from solvents, harmful substances, latex and silicone.

CAT II, EN 388:2016 4121A,

SIZE S  
M  
L  
XL

## ANSELL 48-126

Gloves made of polyester, coated with polyurethane and finished with elastic. The seamless construction ensures comfort and increases safety. Abrasion-resistant coating.

CAT II, EN 388:2016 4121A,  
EN 420:2003+A1:2009

SIZE S  
M  
L  
XL



## ANSELL 48-701



CAT II, EN 388:2016+A1:2018 4342B,  
EN 420:2003+A1:2009

SIZE S  
M  
L  
XL

## ANSELL 48-128

Work gloves with nitrile coating. They have a polyester lining and an elastic knitted cuff. They are lightweight, comfortable and at the same time resistant to abrasion and oil.



CAT II,  
EN 388:2016+A1:2018 4121A,  
EN 420 2003:A1:2009

SIZE S  
M  
L  
XL

## ANSELL 11-819

Gloves coated with fine nitrile foam. They offer increased sensitivity for precision work. Excellent breathability. Can be used in areas with risk of explosion. Touchscreen compatible.

CAT II, EN 16350,  
EN 420:2003+A1:2009,  
EN 388:2016 4121A, ESD certification

SIZE S  
M  
L  
XL  
XXL



## ANSELL 11-842

Gloves made from recycled nylon fibres, coated with recycled nitrile foam. Increased abrasion resistance and good breathability. Free from harmful substances. Touchscreen compatible.

CAT II, EN 388:2016 4131A,  
EN 407 X1XXXX,  
EN ISO 21420:2020

SIZE S  
M  
L  
XL



## ANSELL 92-134

Nitrile gloves for highly demanding tasks. The lightweight construction offers improved sensitivity and advanced motor control. The high-quality nitrile formula ensures greater tear resistance.

CAT III, EN ISO 374-1 TYPE C,  
EN ISO 374-5, EN 21420:2020

SIZE S  
M  
L  
XL



## ANSELL 93-852

Gloves with very high resistance to stretching. Black colour. Textured over the entire surface, providing a secure grip in wet conditions. Powder-free. Thickness: 0.12 mm.

EN ISO 21420:2020,  
EN ISO 374-5:2016,  
EN ISO 374-1:2016

SIZE S  
M  
L  
XL



## ANSELL E014Y

Insulating gloves made of natural rubber, designed for electrical work. Comfortable and effective, they ensure safety. Maximum voltage: 1000 V alternating current (AC), 1500 V direct current (DC).

CAT III, EN 420:2003 + A1:2009,  
EN 60903:2003

SIZE  
M  
L  
XL  
XXL



ARC FLASH  
RESISTANT



Ansell Earth

Ansell Earth is a step towards a secure future for the planet,  
aiming to reduce the impact of personal protective equipment  
on the environment.



# TEKSON®

## CARE AND CLEANING - **microfiber**

### ULTRA SOFT



Cleans without using detergents. Absorbs water perfectly. Does not scratch surfaces. Withstands numerous washing cycles. Does not leave streaks or water marks.  
Material: microfiber.

GRAMMAGE 550g/m<sup>2</sup>

SIZE  
40x40cm

### MICROFIBRE



Excellent microfiber for cleaning, gently cleans surfaces.  
Material: microfiber.

GRAMMAGE 385g/m<sup>2</sup>

SIZE  
40x40cm

### MICROFIBRE

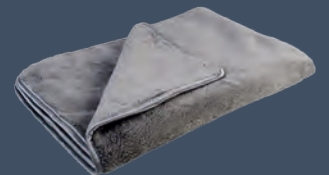


Excellent wipe for cleaning surfaces, leaves no streaks.  
Material: microfiber.

GRAMMAGE 300g/m<sup>2</sup>

SIZE  
40x40cm

### SUPREME



Microfibre / Hand towel.  
Material: microfiber.

GRAMMAGE 1000g/m<sup>2</sup>

SIZE  
90x60cm

### MICROFIBRE

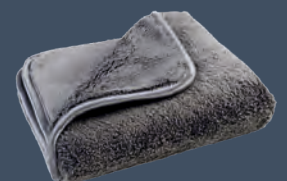


Microfibre cloth, which is perfectly suited for cleaning.  
Material: microfiber.

GRAMMAGE 400g/m<sup>2</sup>

SIZE  
40x40cm

### SUPREME



Microfibre / Hand towel.  
Material: microfiber.

GRAMMAGE 1000g/m<sup>2</sup>

SIZE  
40x40cm



# TEKSON®

## ACCESSORIES AND EQUIPMENT

### TORQUE WRENCH



The wrench is used for changing wheels on trucks. Transmission ratio 1:58, torque of 5200 Nm. The wrench is made of high-quality alloy steel using a precise heat treatment process.

**SOCKETS 32 | 33 MM**

The socket is made of high-quality alloy steel.

### TORQUE WRENCH



Wrench with a long handle. Transmission ratio 1:58, torque of 5200 Nm. The wrench is made of high-quality alloy steel using a precise heat treatment process.

**SOCKETS 32 | 33 MM:  
LONG HANDLE**

The socket is made of high-quality alloy steel.

### TORQUE WRENCH



The wrench is used for changing wheels on trucks. Transmission ratio 1:58, torque 5200 Nm. The wrench is made of high-quality alloy steel using a precise heat treatment process.

**SOCKETS 21, 24, 27, 30, 32 | 33 MM.**

The socket is made of high-quality alloy steel.

### SOCKET SET



Socket set for torque wrench. Contains sockets in sizes 21, 24, 27, 30, 32, 33, 36 and 38 mm.

### WORKSHOP CHAIR



Chair height: 36 cm. It has a drawer and four 2.5' diameter wheels for easy movement.

### 2-IN-1 WORKSHOP CHAIR

Chair with a drawer and 7 wheels for easy mobility. Professional, durable steel frame, supports up to 130 kg, versatile and easy to assemble.

Dimensions (lying position):  
102 × 40.5 × 14 cm  
Dimensions (sitting position):  
55 × 40.5 × 47 cm





# TEKSON®

## ACCESSORIES AND EQUIPMENT

### PORTABLE GAS STOVE



Camping stove powered by a gas cartridge. Adjustable flame level with built-in protection against flames and wind gusts.

Power: 2.5 kW

Supplied with a plastic case

STOVE BURNER: CERAMIC

### PORTABLE GAS STOVE



Camping stove powered by a gas cartridge. Adjustable flame level with built-in protection against flames and wind gusts.

Power: 2.4 kW

Supplied with a plastic case

STOVE BURNER: GAS

### VACUUM CLEANER



Car vacuum cleaner with a working pressure of 90 mPa.

The kit includes: a cleaning gun, a dust bag, a hose for vacuuming dust and nozzle attachments (22, 12 and 11 cm).

### MAGNETIC BRACELET



Practical magnetic bracelet for attracting and picking up screws and nails. The sturdy nylon straps adjust comfortably to fit any wrist size.

### AIR DUST GUN IVECO



A simple way to blow dust out of hard-to-reach areas in the cabin. Maximum pressure of 13 kg/cm<sup>2</sup>. It has a flexible spiral hose that is resistant to bending, 5 m long and 8 mm in diameter, with a dedicated connector at the end.

### AIR DUST GUN M4/DAF



A simple way to blow dust out of hard-to-reach areas in the cabin. Maximum pressure of 13 kg/cm<sup>2</sup>. It has a flexible spiral hose that is resistant to bending, 5 m long and 8 mm in diameter, with a dedicated connector at the end.



# TEKSON®

## ACCESSORIES AND EQUIPMENT

### AIR DUST GUN RENAULT



A simple method for blowing dust from hard-to-reach places in the cabin.  
Maximum pressure: 13 kg/cm<sup>2</sup>.  
It has a flexible spiral hose that is resistant to bending, with a length of 5 m, a diameter of 8 mm, and a dedicated connector at the end.

### AIR DUST GUN SCANIA



Simple method for blowing dust from hard-to-reach places in the cabin.  
Maximum pressure: 13 kg/cm<sup>2</sup>.  
The flexible, kink-resistant spiral hose is 5 m long and has a diameter of 8 mm, ending in a dedicated connector.

### AIR DUST GUN 10KG/CM2



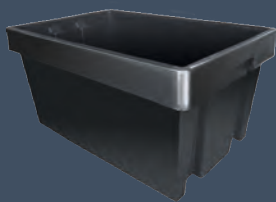
Simple method for blowing dust from hard-to-reach places in the cab.  
Maximum pressure: 10 kg/cm<sup>2</sup>.  
The flexible, kink-resistant spiral hose is 5 m long and has a diameter of 6 mm.  
Universal, with a T-piece connector – can be used in all tractors.  
The hose can be easily stored in the cab.

### AIR DUST GUN 13KG/CM2



Simple method for blowing dust from hard-to-reach places in the cab.  
Maximum pressure: 13 kg/cm<sup>2</sup>.  
The flexible, kink-resistant spiral hose is 5 m long and has a diameter of 8 mm.  
Universal, with a T-piece connector – can be used in all trucks.  
The hose can be easily stored in the cab.

### CONTAINER



Durable storage container with a wide range of applications.  
Resistant to weather conditions and chemicals such as salts, acids, bases, greases and oils.  
Handles in the form of openings.

### O-RING KIT



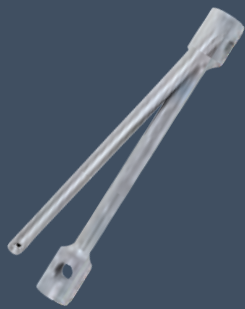
The O-ring set contains 419 pieces.  
Material: Nitrile (NBR).  
Section type: Round.  
Hardness: 65-70 HA.  
Temperature range: from +120°C to -15°C.



# TEKSON®

## ACCESSORIES AND EQUIPMENT

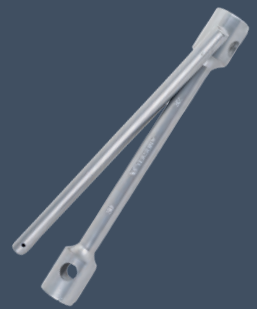
### SPANNER



395 mm long wrench for unscrewing nuts on heavy vehicles. Includes an adapter to allow for unscrewing. Made of stainless steel.

**SIZE**  
32/ 33 mm

### SPANNER



395 mm long wrench for unscrewing nuts on heavy vehicles. Includes an adapter to allow for unscrewing. Made of stainless steel.

**SIZE**  
19/24 mm

### SPANNER



395 mm long wrench for unscrewing nuts on heavy vehicles. Includes an adapter to allow for unscrewing. Made of stainless steel.

**SIZE**  
27/ 30 mm

### SPANNER



395 mm long wrench for unscrewing nuts on heavy vehicles. Includes an adapter to allow for unscrewing. Made of stainless steel.

**SIZE**  
30/ 32 mm

### BLOW GUN



Aluminium blow gun, designed for use in automotive workshops. Nozzle length: 20 mm. The blow gun is made of aluminium and is designed for use in automotive workshops.





# SHOES

## HONEYWELL HIT-S



Puncture protection in the form of a protective sole that is non-metallic and non-magnetic FLEXIUM, made from a highly resistant and elastic material, with a resistance of 1100 N. EN ISO 20345 EN 61340-5-1

## BCRAD-T-BSY



Anti-slip and anti-static sole made of EVA and rubber. Shock absorption under the heel. Non-metallic protective sole made of composite material, protecting the foot against punctures with a resistance of 1100 N. Composite toe cap resistant to impacts with an impact energy of 200 J and compression up to 15 kN. Reflective elements. Category S1 PS SR.

## BCTANG-P-BSE



Made from knitted textile material combined with TPU. Low boots, reaching just above the ankle. Lace-up fastening. Non-slip, antistatic sole, made from a combination of TPU, EVA and rubber. Shock absorption under the heel. Kevlar anti-perforation sole, protecting the foot against perforations with a resistance of 1100 N. Composite toe cap resistant to impact with an impact energy of 200 J and compression up to 15 kN. Category S1 PS SR.

## BCTITAN-HARX-B



Safety shoes TITAN-HARX, for men. Made from cowhide leather with additional reinforcement on the toe cap. Features antistatic (ESD) properties, tested in accordance with EN IEC 61340-4-3:2018. Compliant with EN ISO 20344 and EN ISO 20345 standards.

## JALAS® ZENIT EVO 7128



The oil-resistant RPU outsole provides excellent grip, while the JALAS® aluminium toe cap, plasma-treated composite fabric anti-perforation sole and PORON® XRD® impact protection zones protect feet at work.

## JALAS® EXALTER 9935



BOA® Fit system (made of recycled material) on the sides, eliminating pressure points. Aluminium toe cap, anti-perforation sole in metal-free recycled material, and Vibram® outsole recycled nitrile rubber outsole.



## SAFETY ACCESSORIES

### 3M 1100



Anti-noise disposable earplugs 1100 (uncorded) are designed to reduce exposure to dangerous levels of noise when inserted into the ear canal.

EN 352-2:2002

### 3M 1110



Rolled ear plugs with polyester cord are made of expandable polyurethane foam, offering great comfort and good protection. One size fits most ear canals.

EN 352-2002

### 3M 6200



The reusable half-masks in the 6000 series are economical, require very little maintenance, are simple to use and extremely lightweight. Available in 3 sizes, they are equipped with the 3M™ bayonet fixing system, allowing a connect a wide range of filters protecting against gases vapours and particles.

EN 140

### 3M 7200



The reusable half-masks 3M™ 7500 series offer exceptional comfort. Reduced breathing resistance minimises the temperature inside the mask, which improves comfort.

EN 140

### 3M 5911



The filter (P1) protects against gases, vapours and particles. It is compatible with half-masks 3M™ 6000, 6500 and 7000 series half masks, as well as full face masks 3M™ 6000 series full face masks.

EN 143

### 3M PELTOR G3000 NUV



The helmet complies with EN 397 STANDARD. It is approved for temperatures down to -30°C. It meets the requirements for resistance to molten metal splash (MM). Designed for use in harsh conditions, it offers excellent ventilation and visibility.

EN 397

# Honeywell

## SAFETY ACCESSORIES

### BILSOM 303L 1006186



Disposable ear plugs made in polyurethane foam. They prevent dirt and other substances from settling on the skin and from entering the ear canal. The Bilsom 300 series are ideal for workers exposed to noise at work. Packaging: 200 pairs, refill for dispenser.

EN 352-2

### BILSOM 303L 1005073



Disposable ear plugs made from polyurethane foam. They prevent dirt and other substances from settling on the skin and from entering the ear canal.

EN 352-2

### A700 1015361



Protective eyewear HONEYWELL A700 goggles are designed to protect against splashes and impacts (45 m/s). They are lightweight, comfortable goggles with sporty temples, whose are fitted with soft materials to make them more comfortable.

EN 170  
EN 166

### HONEYWELL PROTEGE



Anti-fog and anti-scratch coating (K)  
Lens marking: 2C-1.2 B-D 1 FT K N  
Protects against small projections solid objects with an impact up to 45 m/s (FT).

EN 166  
EN 170

### PERFECT FIT POLY SKIN 2400260



Honeywell protective gloves Perfect Poly Skin 2400260 knitted, blue nylon, grey polyurethane polyurethane coating. Do not contain silicone. Coated with elastic polyurethane. Lightweight for maximum freedom of movement. Pack: 10 pairs  
Box: 100 pairs

EN 388 2110X

### HONEYWELL RUNNER BLUE



Low safety shoes RUNNER BLUE  
Protective toecap fibreglass-based composite glass. Soft nylon material with TPU film upper  
Foam midsole and rubber outsole. Wear indicator S3 SRC ESD category.

Sizes: 35-49

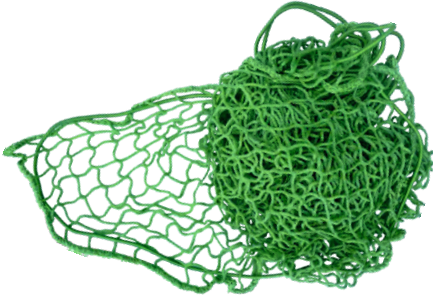
EN 20345  
EN 61340-5



# TEKSON®

## LOAD SECURING

**SAFETY  
NETS**



**RACHET  
STRAPS**



**GLOVES  
DURABLE**



**GLOVES  
WHITE**



**GLOVES  
BLUE LIGHT**



**STRAP**





## **Safety and comfort - all in one place.**

Our range includes :

- work clothing,
- protective eyewear,
- safety footwear,
- protective gloves,
- head protection,
- hearing protection,
- face and eye protection,
- respiratory protection,
- fall arrest systems



**CLOTHING  
UNIQUE PRINTING  
OR EMBROIDERY  
WITH YOUR LOGO**



We also offer customisable workwear.  
Contact our sales representative to obtain  
a personalised quote for the products  
you are interested in.

